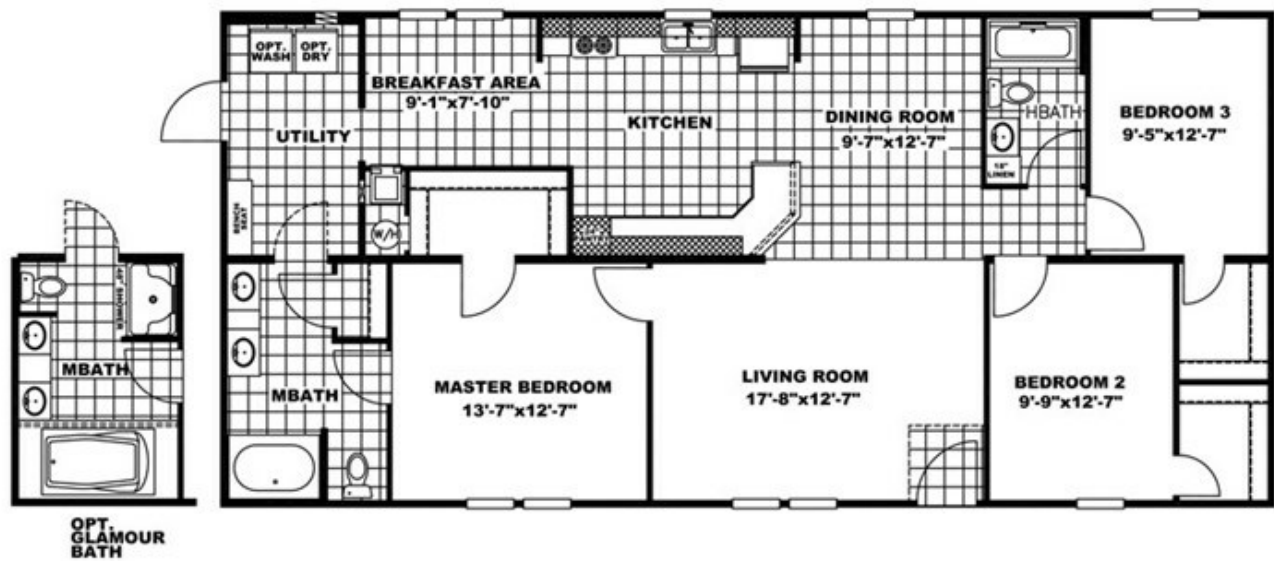




THE SMITHFIELD



THE SMITHFIELD Floor plan number: NO2025439TNAB
3 beds • 2 baths • 1568 sq.ft. • 28' width • 56' depth



Our home building facilities invest in continuous product and process improvements. Plans, dimensions, features, materials, specifications and availability are subject to change without notice or obligation. Renderings and floor plans are representative likenesses of our homes and may differ from the actual homes. We invite you to tour a Home Center near you and inspect the highest value in quality housing available or call (423) 288-2020 to speak with a Home Consultant. Copyright 2017, CMH. All rights reserved.

CLAYTON HOMES-KINGSPORT

3051 EAST STONE DRIVE
KINGSPORT, TN 37660

Monday - Thursday: 9am - 7pm
Friday: 9am - 6pm
Saturday: 9am - 5pm
Sunday: Closed

(423) 288-2020